



Manufacturers of High Quality Connectors and Accessories

LMD PROTECTIVE CAPS

High performance protective covers for the environmental protection of MIL-DTL-38999 Series III and MIL-DTL-26482 circular connectors.



wealdelectronics.com



Contents

General information	3
LMD 7001 Series - protective caps for MIL-DTL-38999 Series III plug connectors	4 - 5
LMD 7002 Series - protective caps for MIL-DTL-38999 Series III receptacle connectors	6 - 7
LMD 7005 Series - protective caps for MIL-DTL-26482 plug connectors	8 - 9
LMD 7006 Series - protective caps for MIL-DTL-26482 receptacle connectors	10 - 11
Product safety	12

Lodge Group

Established in 1976, Weald Electronics Ltd is part of the privately-owned Lodge Group which includes the connector distributor FC Lane Electronics and its Autosport Division, Lane Motorsport.

Weald Electronics is predominantly known for its comprehensive selection of military circular connectors, however, Weald also manufactures protective caps and backshells for MIL-DTL-38999, 26482 and other types of connectors. With in-house design, manufacturing and test facilities, Weald is also able to rapidly develop custom solutions to meet specific requirements. Standard products are normally available next day and have no MOQ or MOV.

Products from Weald Electronics Ltd are available from FC Lane Electronics Ltd.

t: +44 (0) 1403 790 661

e: sales@fclane.com

w: fclane.com

LMD Range General Information

LMD Range protective caps have been developed for the environmental protection of military circular connectors in both threaded and bayonet versions. The range comprises 9 shell sizes and various styles.

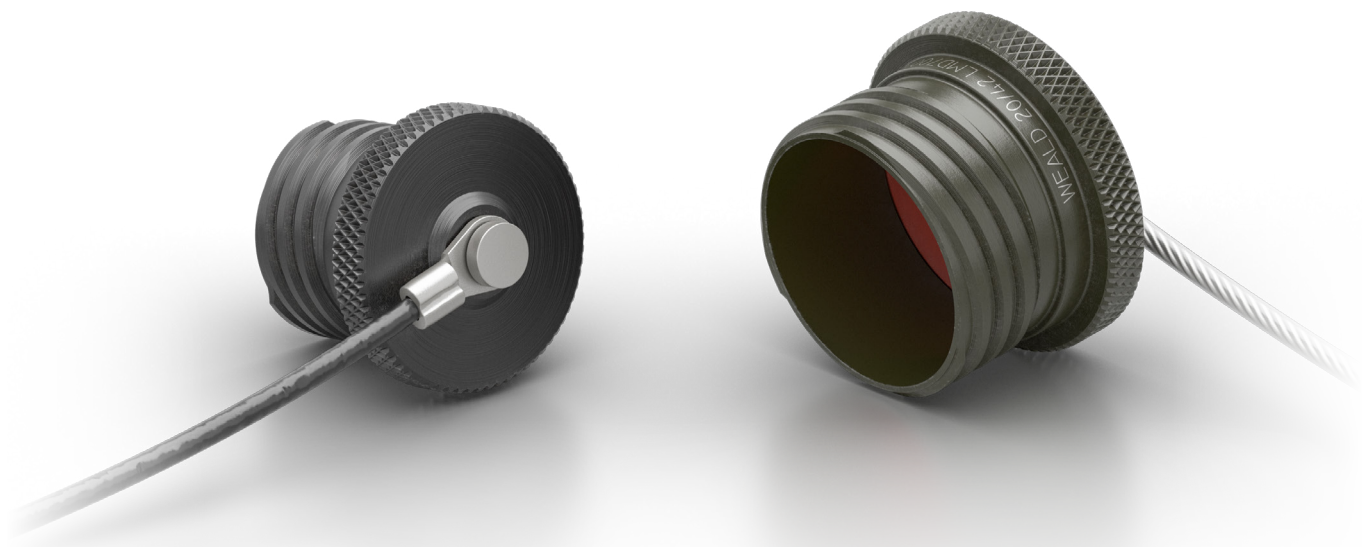
Features and Benefits

- Designed to perform to the requirements of MIL-DTL-38999 Series III and MIL-DTL-26482
- All parts machined from solid material for reliable strength and performance
- Stainless steel wire rope or nylon cords
- Wide choice of plating options available

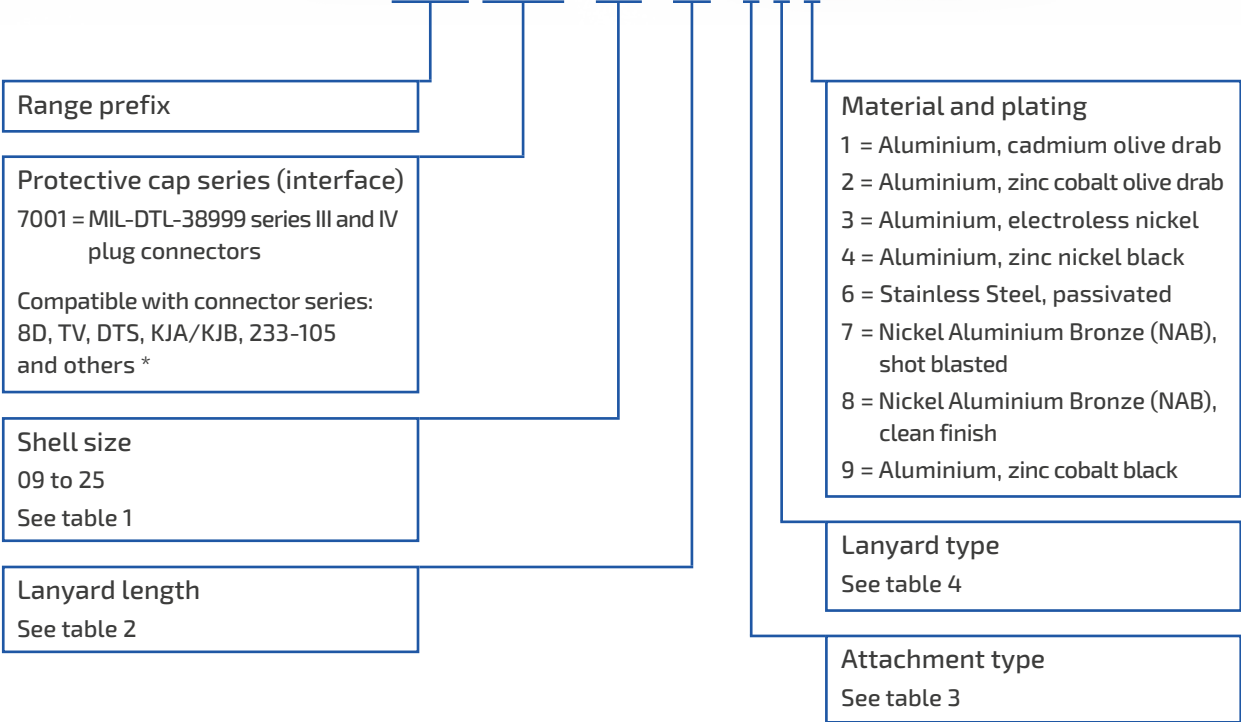
Materials	
Shell	Machined Aluminium alloy, Stainless Steel or Nickel Aluminium Bronze
Gasket	Silicone elastomer
Ring	Stainless Steel (passivated) or Brass (Electroless Nickel plated)
Rope	Insulated Stainless Steel (passivated) wire rope or Nylon cord
Fasteners	Stainless Steel (passivated) or Copper (Electroless Nickel plated)

LMD 7001 Series - Plug Protective Caps

For use with: MIL-DTL-38999 Series III/EN3645



Part no example: **LMD 7001 - 09 - 01 - 1 1 1**



* - Contact local Sales Office for details

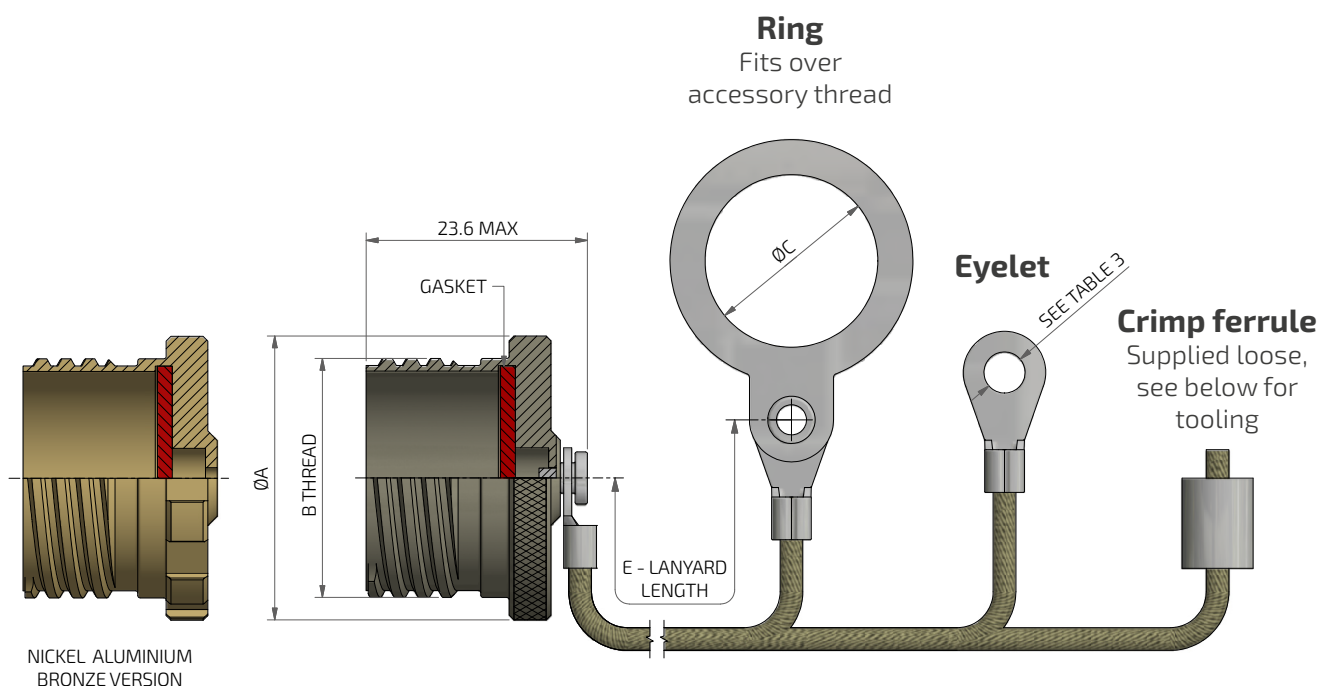


Table 1

Shell size	ØA max	B thread	ØC ± 0.25
09	21.05	0.625-0.1P-0.3L-TS	13.50
11	24.55	0.750-0.1P-0.3L-TS	18.50
13	28.25	0.875-0.1P-0.3L-TS	20.50
15	30.25	1.000-0.1P-0.3L-TS	23.50
17	34.25	1.1875-0.1P-0.3L-TS	26.30
19	37.25	1.250-0.1P-0.3L-TS	29.50
21	42.25	1.375-0.1P-0.3L-TS	32.50
23	44.25	1.500-0.1P-0.3L-TS	34.50
25	47.75	1.625-0.1P-0.3L-TS	39.00

Table 2

Ref. no	Lanyard Length E ± 8
00	no lanyard
01	120
02	80
03	125
04	140
05	150
06	330
07	300
08	200
10	70
11	90
12	100

Table 3

Ref. no	Attachment type
0	No attachment (no lanyard)
1	Ring (see table 1)
2	Eyelet 4.3 mm *
4	Eyelet 4.0 (for chain only)
5	Crimp ferrule (supplied loose) *
6	No attachment (with lanyard)
7	Eyelet 3.7 mm *
8	Eyelet 3.2 mm *
9	Eyelet 5.0 mm *

Table 4

Ref. no	Lanyard type
0	no lanyard
1	Teflon covered (clear) stainless steel wire rope
2	Olive drab nylon cord
4	Ball chain
5	Black nylon cord
6	Teflon covered (black) stainless steel wire rope

* - Attachments unavailable with ball chain



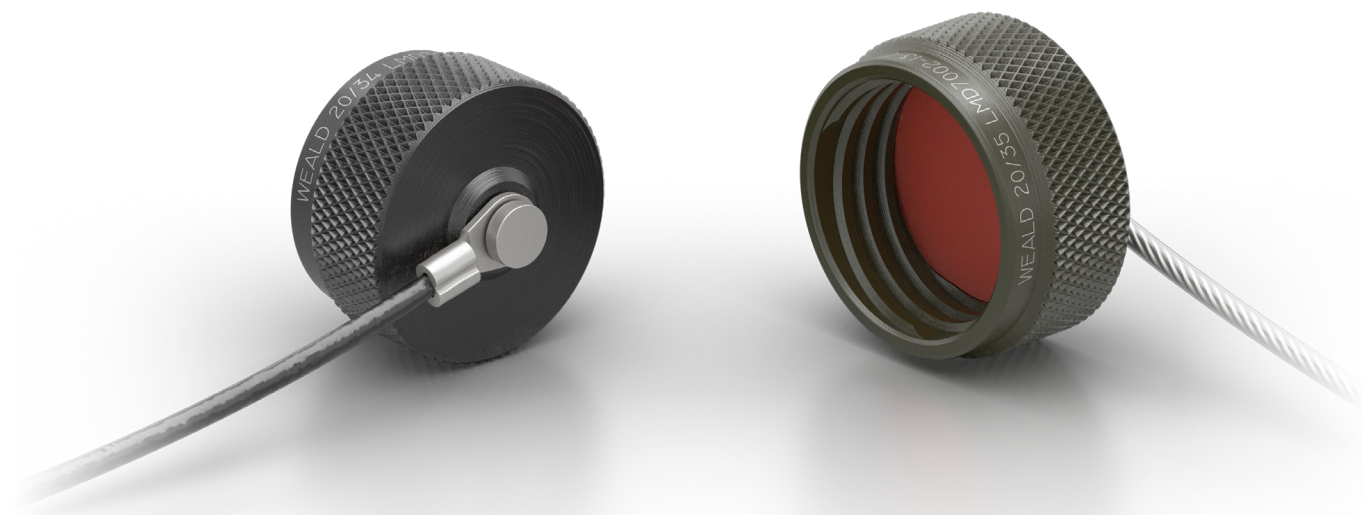
Recommended tools for crimp ferrule

LMT/2/81085 - Crimp Tool Frame

LMT/2/81086 - Crimp Die Set

LMD 7002 Series - Receptacle Protective Caps

For use with: MIL-DTL-38999 Series III/EN3645



Part no example:

LMD 7002 - 09 - 01 - 1 1 1

Range prefix

Protective cap series (interface)
7002 = MIL-DTL-38999 series III and IV
receptacle connectors

Compatible with connector series:
8D, TV, DTS, KJA/KJB, 233-105
and others *

Shell size

09 to 25

See table 1

Lanyard length

See table 2

Material and plating

- 1 = Aluminium, cadmium olive drab
- 2 = Aluminium, zinc cobalt olive drab
- 3 = Aluminium, electroless nickel
- 4 = Aluminium, zinc nickel black
- 6 = Stainless Steel, passivated
- 7 = Nickel Aluminium Bronze (NAB),
shot blasted
- 8 = Nickel Aluminium Bronze (NAB),
clean finish
- 9 = Aluminium, zinc cobalt black

Lanyard type

See table 4

Attachment type

See table 3

* - Contact local Sales Office for details

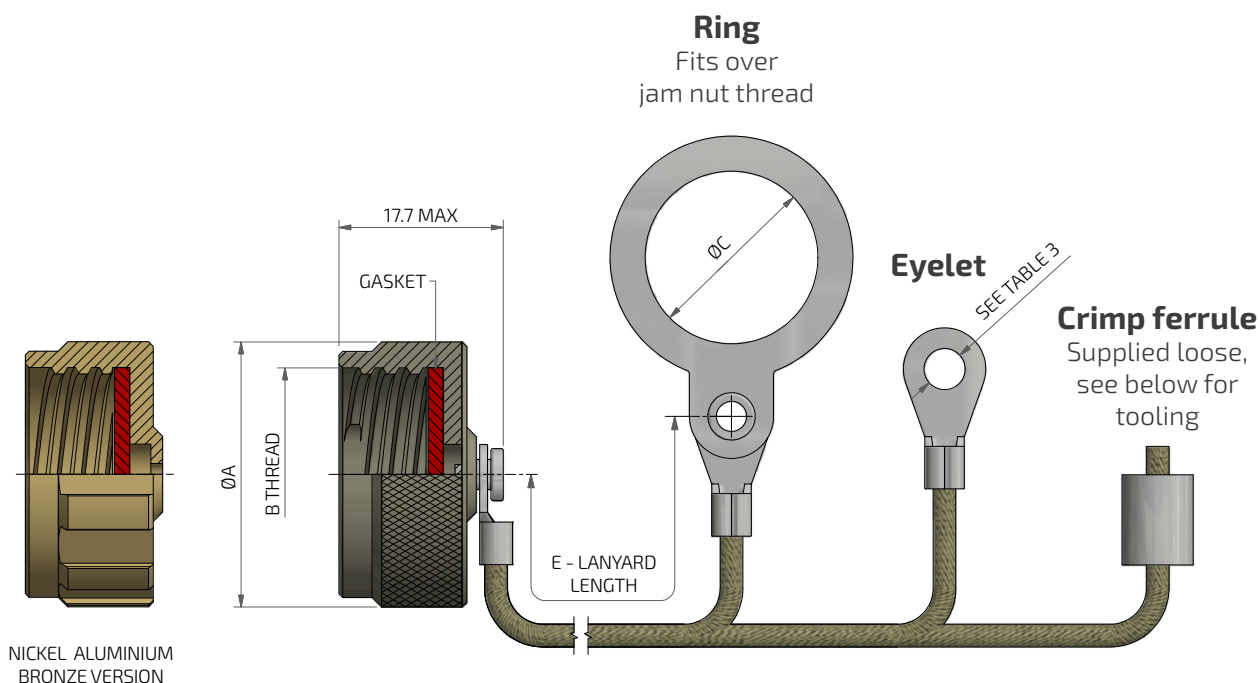


Table 1

Shell size	ØA max	B thread	ØC ± 0.25
09	21.75	0.625-0.1P-0.3L-TS	17.95
11	25.25	0.750-0.1P-0.3L-TS	22.27
13	28.25	0.875-0.1P-0.3L-TS	25.42
15	31.25	1.000-0.1P-0.3L-TS	30.23
17	35.75	1.1875-0.1P-0.3L-TS	32.30
19	37.25	1.250-0.1P-0.3L-TS	36.57
21	40.25	1.375-0.1P-0.3L-TS	38.55
23	43.75	1.500-0.1P-0.3L-TS	42.92
25	47.25	1.625-0.1P-0.3L-TS	44.75

Table 2

Ref. no	Lanyard Length E ± 8
00	no lanyard
01	120
02	80
03	125
04	140
05	150
06	330
07	300
08	200
10	70
11	90
12	100

Table 3

Ref. no	Attachment type
0	No attachment (no lanyard)
1	Ring (see table 1)
2	Eyelet 4.3 mm *
4	Eyelet 4.0 (for chain only)
5	Crimp ferrule (supplied loose) *
6	No attachment (with lanyard)
7	Eyelet 3.7 mm *
8	Eyelet 3.2 mm *
9	Eyelet 5.0 mm *

Table 4

Ref. no	Lanyard type
0	no lanyard
1	Teflon covered (clear) stainless steel wire rope
2	Olive drab nylon cord
4	Ball chain
5	Black nylon cord
6	Teflon covered (black) stainless steel wire rope

* - Attachments unavailable with ball chain



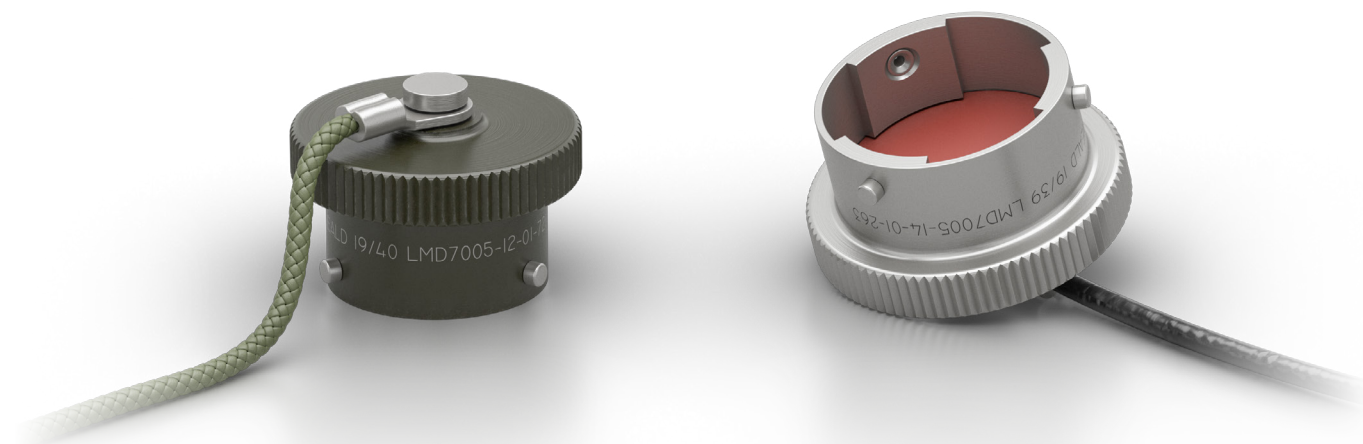
Recommended tools for crimp ferrule

LMT/2/81085 - Crimp Tool Frame

LMT/2/81086 - Crimp Die Set

LMD 7005 Series - Plug Protective Caps

For use with: MIL-DTL-26482 Series I, PAT 105/PAT 603, MIL-DTL-26482 Series II, MIL-DTL-83723 SERIES I and II



Part no example: **LMD 7005** - 08 - 01 - 1 1 1

Range prefix

Protective cap series (interface)

7005 = MIL-DTL-26482 series I
PAT 105 / PAT 603
MIL-DTL-26482 series II
MIL-DTL-83723 SERIES I and II
plug connectors

Compatible with connector series:
LMH, 62GB, AB05, KPT, 851, IPT
and others *

Shell size

08 to 24

See table 1

Lanyard length

See table 2

Material and plating

1 = Aluminium, cadmium olive drab
2 = Aluminium, zinc cobalt olive drab
3 = Aluminium, electroless nickel
4 = Aluminium, zinc nickel black
6 = Stainless Steel, passivated
9 = Aluminium, zinc cobalt black

Lanyard type

See table 4

Attachment type

See table 3

* - Contact local Sales Office for details

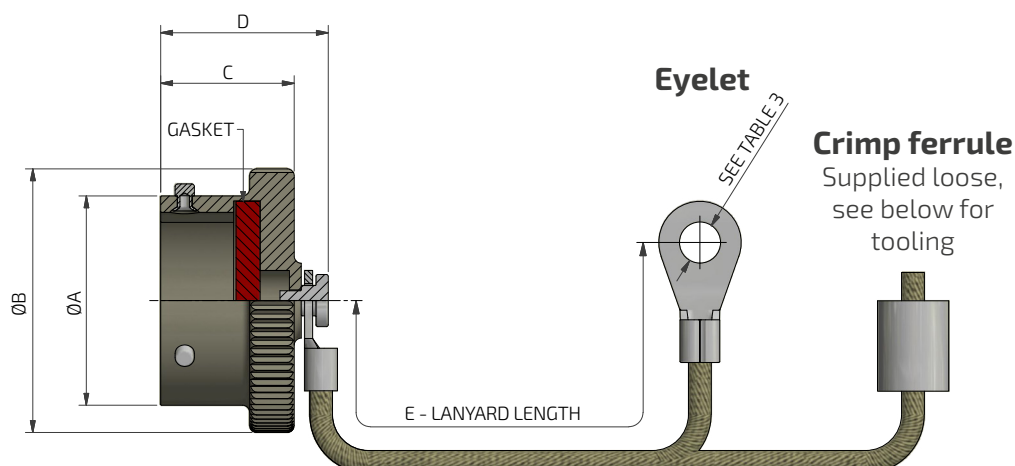


Table 1

Shell size	$\varnothing A \pm 0.05$	$\varnothing B$ max	C max	D max
08	11.85	19.00	14.20	18.05
10	14.85	21.45	14.20	18.05
12	18.90	25.05	14.20	18.05
14	22.05	28.00	14.20	18.05
16	25.25	31.70	14.20	18.05
18	28.40	34.85	14.20	18.05
20	31.60	38.05	15.85	19.35
22	34.75	41.25	15.85	19.35
24	37.95	44.40	15.85	19.35

Table 2

Ref. no	Lanyard Length E ± 8
00	no lanyard
01	120
02	80
03	125
04	140
05	150
06	330
07	300
08	200
10	70
11	90
12	100

Table 3

Ref. no	Attachment type
0	No attachment (no lanyard)
2	Eyelet 4.3 mm *
4	Eyelet 4.0 mm (for chain only)
5	Crimp ferrule (supplied loose) *
6	No attachment (with lanyard)
7	Eyelet 3.7 mm *
8	Eyelet 3.2 mm *
9	Eyelet 5.0 mm *

* - Attachments unavailable with ball chain

Table 4

Ref. no	Lanyard type
0	no lanyard
1	Teflon covered (clear) stainless steel wire rope
2	Olive drab nylon cord
4	Ball chain
5	Black nylon cord
6	Teflon covered (black) stainless steel wire rope



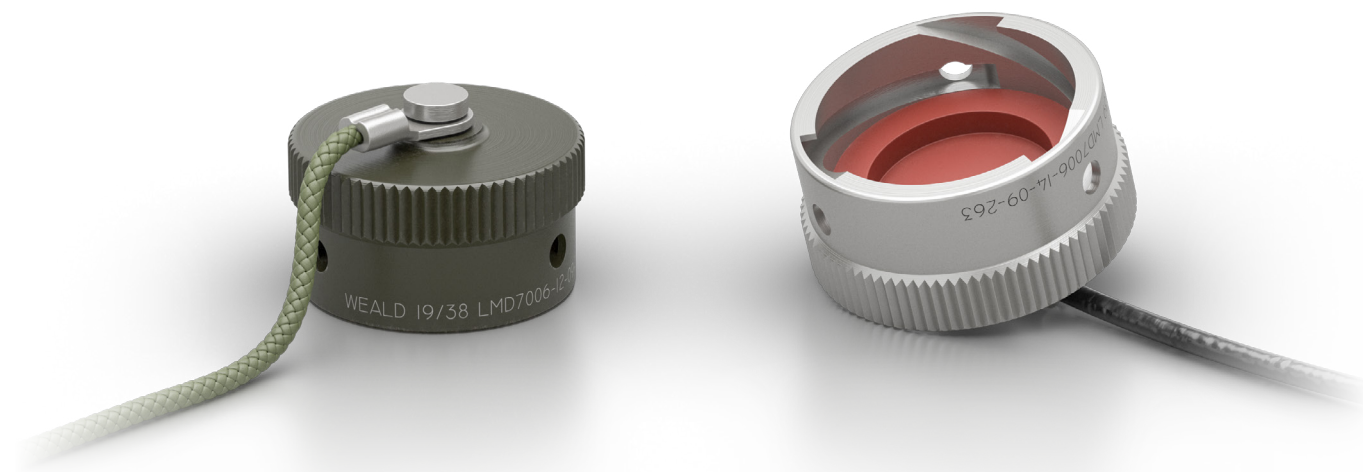
Recommended tools for crimp ferrule

LMT/2/81085 - Crimp Tool Frame

LMT/2/81086 - Crimp Die Set

LMD 7006 Series - Receptacle Protective Caps

For use with: MIL-DTL-26482 Series I, PAT 105/PAT 603, MIL-DTL-26482 Series II, MIL-DTL-83723 SERIES I and II



Part no example: **LMD 7006** - 08 - 01 - 1 1 1

Range prefix

Protective cap series (interface)

7006 = MIL-DTL-26482 series I
PAT 105 / PAT 603
MIL-DTL-26482 series II
MIL-DTL-83723 SERIES I and II
receptacle connectors

Compatible with connector series:
LMH, 62GB, AB05, KPT, 851, IPT
and others *

Shell size

08 to 24
See table 1

Lanyard length

See table 2

Material and plating

1 = Aluminium, cadmium olive drab
2 = Aluminium, zinc cobalt olive drab
3 = Aluminium, electroless nickel
4 = Aluminium, zinc nickel black
6 = Stainless Steel, passivated
9 = Aluminium, zinc cobalt black

Lanyard type

See table 4

Attachment type

See table 3

* - Contact local Sales Office for details

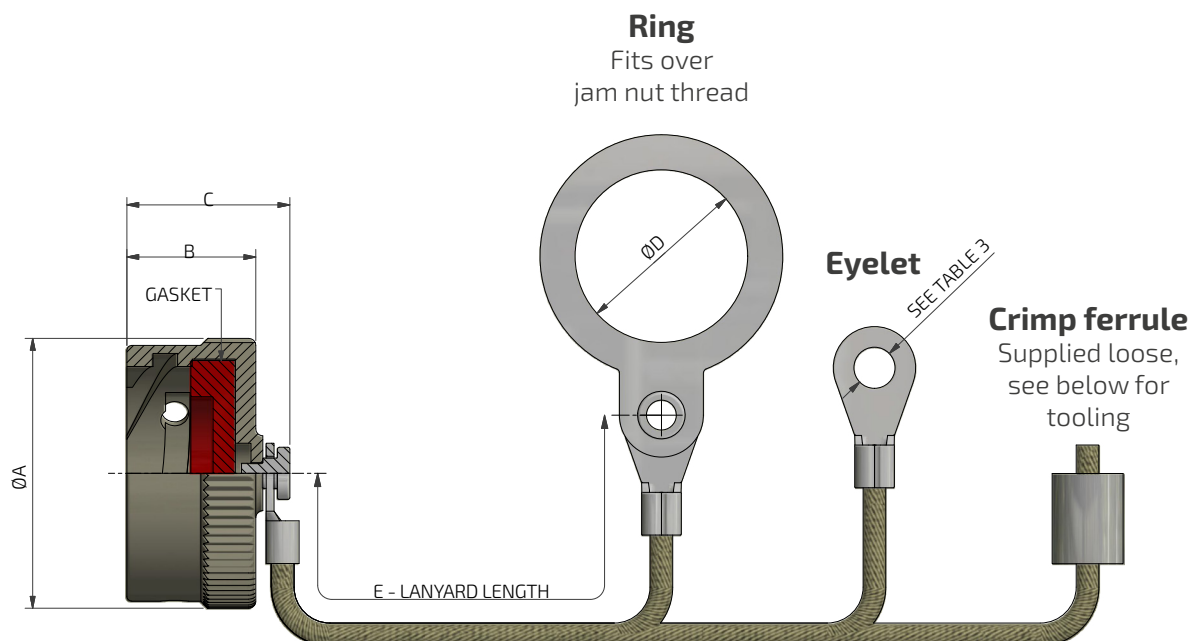


Table 1

Shell size	$\varnothing A$ max	B max	C max	$\varnothing D \pm 0.15$
08	18.65	13.85	17.70	15.05
10	21.80	13.85	17.70	18.25
12	25.35	13.85	17.70	23.00
14	28.50	13.85	17.70	26.20
16	31.70	13.85	17.70	29.35
18	34.85	13.85	17.70	32.54
20	38.05	13.85	17.70	35.70
22	41.20	13.85	17.70	38.90
24	44.40	14.75	18.60	42.05

Table 2

Ref. no	Lanyard Length E \pm 8
00	no lanyard
01	120
02	80
03	125
04	140
05	150
06	330
07	300
08	200
10	70
11	90
12	100

Table 3

Ref. no	Attachment type
0	No attachment (no lanyard)
1	Ring (see table 1)
2	Eyelet 4.3 mm *
4	Eyelet 4.0 (for chain only)
5	Crimp ferrule (supplied loose) *
6	No attachment (with lanyard)
7	Eyelet 3.7 mm *
8	Eyelet 3.2 mm *
9	Eyelet 5.0 mm *

* - Attachments unavailable with ball chain

Table 4

Ref. no	Lanyard type
0	no lanyard
1	Teflon covered (clear) stainless steel wire rope
2	Olive drab nylon cord
4	Ball chain
5	Black nylon cord
6	Teflon covered (black) stainless steel wire rope



Recommended tools for crimp ferrule

LMT/2/81085 - Crimp Tool Frame

LMT/2/81086 - Crimp Die Set

Product Safety Information

These notes are intended to be used in conjunction with the Product Catalogue and Product Specification. Products may be safely used in the applications for which they have been designed and within the specified rating and environments. If products are exposed to conditions outside the performance ratings or specified environments they may constitute a hazard. In particular it should be noted that:

1. Material Content

Circular Connectors generally use metalwork parts made of brass, aluminium, phosphor-bronze or steel, which, dependant on the particular application, may be passivated and protected with cadmium or zinc plate – in conjunction with chromated or anodised surface finishes. The insulating materials can either be natural or synthetic rubber, together with plastic or glass-filled plastic moulded parts. Contact materials vary but are usually made of brass, phosphor-bronze, alumeL or chromel.

2. Electric Shock, Burns and Fire

Hazard can occur if the product is used outside the specified parameters or if the product is damaged, wrongly wired, poorly assembled, poorly integrated into larger equipments, or contaminated with conductive fluids. Live circuit terminations must be protected and live circuits never broken by disconnecting products.

Hot spots may be created when resistance is increased due to damage or incorrect integration particularly soldering, or loose terminations. Overheating can cause breakdown of insulation, electric shock, burns or, ultimately, fire. In the event of fire noxious and/or toxic fumes may be released and, in these circumstances, any fire involving the product should be dealt with by personnel properly equipped. Connectors with exposed terminations or contacts should not be used on the current supply side of a circuit with exposed contacts on an unmated product. Before making a circuit live, the product and wiring should be checked to ensure there is no electrically conducting debris present. Circuit resistance checks should also be conducted before making the circuit live. Always ensure that connectors are assembled and wired by properly trained personnel.

3. Use, Transport and Storage of Products

Care must be exercised to avoid damage to any part of the products during transporting, storage or use. Abnormal transit or storage conditions and abuse during installation can give rise to damage. Products should not be used in a damaged condition.

Improper storage (particularly of damaged products) can give rise to additional hazards particularly corrosion. Attention is specifically drawn to the need for proper storage of products containing cadmium and you are advised to see the Guidance Note from the Health and safety Executive on Cadmium – Health and Safety Precautions.

4. Disposal of Products

Product should not be burnt.

Safety Rules

- Follow the guidelines given
- Always protect live circuits and never disconnect a live connector
- Never use a damaged connector
- Never burn discarded connectors

Lodge Group

FC Lane Electronics Ltd

Franchised connector
distributor

+44 (0) 1403 790 661
fclane.com



Weald Electronics Ltd

Manufacturers of high quality
connectors and accessories

+44 (0) 1403 790 715
wealdelectronics.com



Lane Motorsport

Division of FC Lane dedicated
to motorsport industry

+44 (0) 1403 790 661
lanemotorsport.com

